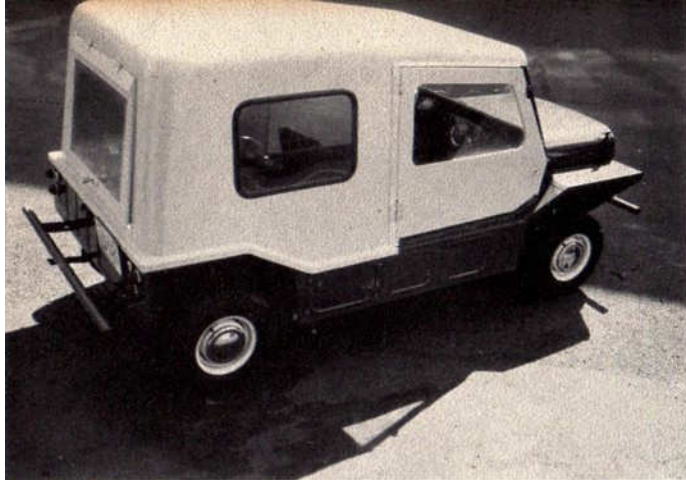




MinipassionMini.com

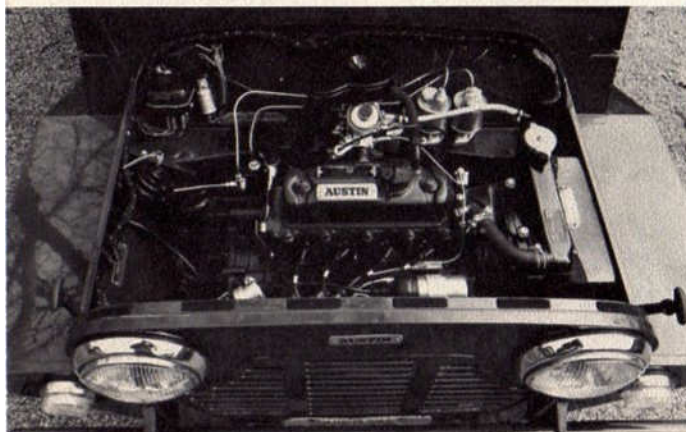
AUSTIN  
mini MOKE



## AUSTIN <sup>\*</sup>mini-MOKE

\*"moke/'mōk/n [origin unknown] 1. Slang Brit: DONKEY"

Own a four-passenger donkey! The Austin Mini-Moke is as tough and versatile as its namesake, but not half so obstinate. The rugged transverse-mounted BMC engine combined with front wheel drive makes it sure-footed on the roughest terrain. Carrying a load, caddying around the golf course, or coursing over back roads and beaches, the Austin Mini-Moke is the real 'can do' vehicle. A lot more economical than a donkey, too!



# SPECIFICATIONS

**ENGINE:** In-line, water-cooled, overhead-valve, 4-cylinder; three-bearing counter-balanced crankshaft. In unit with clutch, gearbox, and final drive. Installed transversely at front of vehicle. Bore 2.478 in. (62.9 mm.). Stroke 2.687 in. (68.26 mm.). Cubic capacity 51.74 cu. in. (848 c.c.). Compression ratio 8.3:1. Maximum b.h.p. 34 at 5,500 r.p.m. Maximum torque 44 lb. ft. at 2,900 r.p.m.

**FUEL SYSTEM:** Single S.U. carburetor, type HS; S.U. electrical fuel pump; air cleaner with paper element; petrol tank capacity 7½ gallons; fuel filters in pump and fuel tank.

**LUBRICATION:** Full pressure to engine bearings, sump forms oil bath for gearbox and final drive; internal gear-type pump driven by camshaft; full-flow oil filter with renewable element; filter with switch operation warning light on fascia to indicate when oil filter change is necessary; gauze strainer in sump; magnetic sump drain plug. Oil capacity, including transmission, approx. 5 quarts including filter.

**IGNITION:** 12-volt coil, and distributor with automatic vacuum control.

**COOLING SYSTEM:** Pressurized radiator with pump, fan, and thermostat. Capacity approx. 3 quarts.

**CLUTCH:** 7¼ in. diameter, hydraulic operation by pendent pedal.

**GEARBOX:** Four speeds and reverse with synchromesh on second, third, and top; in unit with engine and final drive; central floor-mounted gear lever. Gear ratios: 1st, 3.628:1; 2nd, 2.172:1; 3rd, 1.412:1; Top, 1:1.

**FINAL DRIVE:** To front wheels via helical spur gears and open shafts with universal joints; drive casing in unit with engine and gearbox.

**STEERING:** Rack and pinion; 2-1/3 turns lock to lock; two-spoke 15¾ in. diameter steering-wheel. Turning circle 31 ft.

**SUSPENSION:** Front (includes final drive): Independent with levers of unequal length. Swivel axle mounted on ball joints. Rubber springs and telescopic shock ab-

sorbers mounted above top levers. Top levers roller-bearing and lower levers rubber-mounted at inner end. Fore and aft location by rubber-mounted tie-rod. REAR: Independent trailing tubular levers with rubber springs and telescopic shock absorbers. Levers carry stub shaft for hubs which have twin, dual-purpose bearings.

**BRAKES:** Hydraulically operated by pendent pedal with two leading shoes at front and trailing shoes at rear; 7 in. diameter by 1½ in. wide front and 1¼ in. rear. **HANDBRAKE:** Central pull-up lever which operates on rear wheels. A pressure limiting valve is introduced between the master cylinder and rear brakes.

**ROAD WHEELS:** Pressed steel, 4-stud fixing; 5.20 — 10 four-ply tubeless tires.

**ELECTRICAL:** 12-volt, 34-amp. hr. capacity battery at 20-hr. rate. Double-dipping headlamps with foot-operated dip switch; sidelamps in front flashers; combined rear lamps and stop lamps; separate rear flashers and reflectors; rear number-plate illuminating lamp; single horn.

**INSTRUMENTS:** Speedometer with petrol gauge, including warning lights to show dynamo not charging, headlamp high-beam position, low oil pressure and dirty oil filter element. The various switches, including combined ignition/starter switch, are mounted on a panel in the center of the fascia.

**BODYWORK:** Pressed steel unitary construction, open-type body with vinyl-treated fabric tilt cover, supported by detachable folding tilt tubes. Fabricated pressed steel sub-frames, detachable from the body provide mounting at front for power pack/front-wheel-drive assembly, and for trailing arm suspension elements at the rear. Seat of pressed steel construction is detachable, and has a limited range of fore and aft adjustment. Hinged bonnet top is also detachable. Windscreen can be folded down or removed completely. Strong tubular bumpers front and rear. Wheelbase 80 in. Total length 120 in.

**COLORS:** Spruce Green and Old English White.

**OPTIONAL EXTRA:** Front passenger seat, 2 rear passenger seats, 5 Weathermaster tires, sump guard, 3 window hardtop, 5 window hardtop.



*Specifications and color subject to change without notice.*

[MinipassionMini.com](http://MinipassionMini.com)

THE BRITISH MOTOR CORPORATION / HAMBRO, INC., 734 Grand Ave., Ridgefield, New Jersey  
FORM BW 8/66 US Printed in U.S.A.